

# Parts of a Flower

## Key Words

Filament

Anther

Ovary

Ovules

Petals

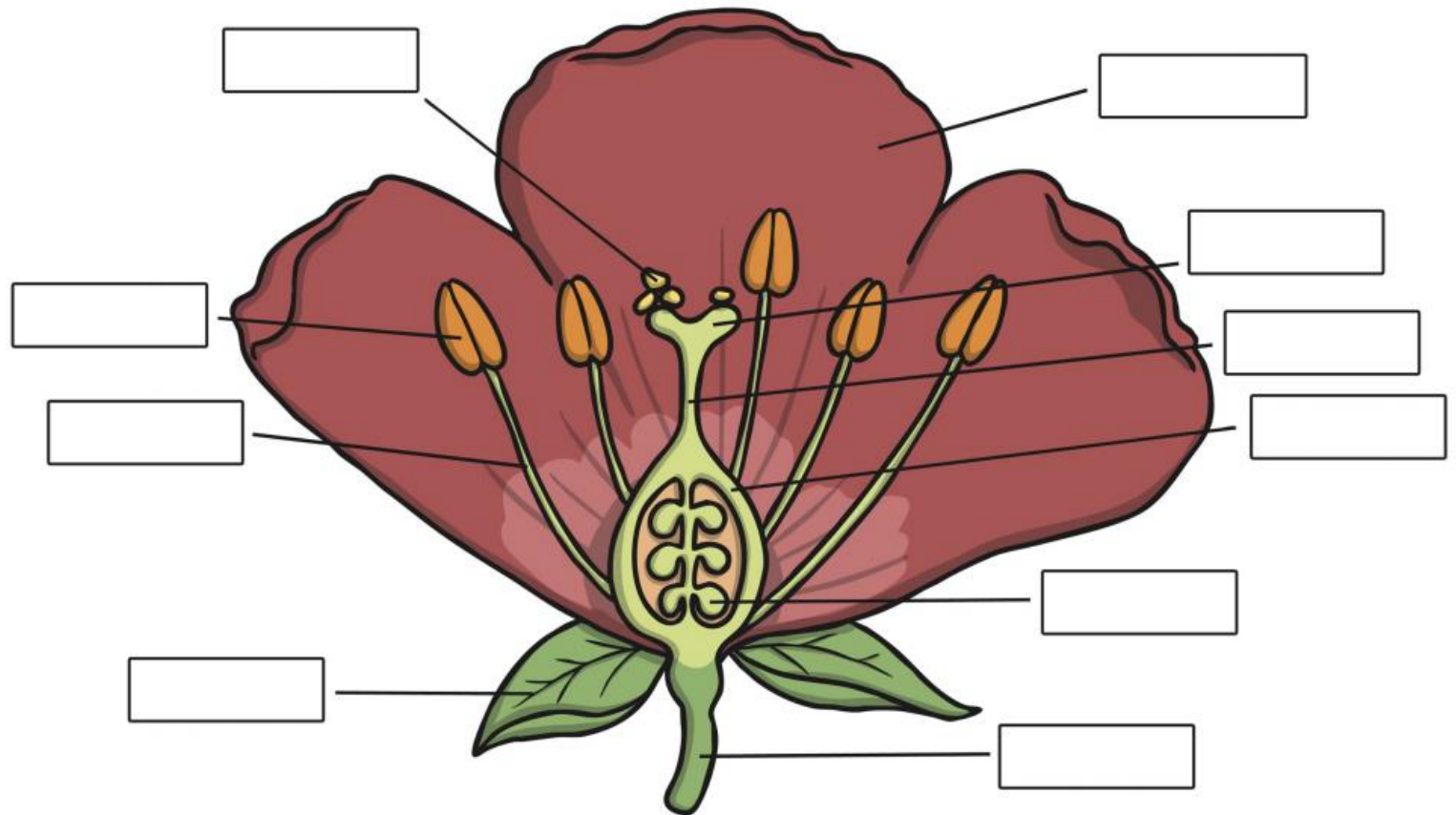
Stem

Leaves

Pollen

Stigma

Style



**Task 1:** After labelling your picture, find a flower that has as many of these parts as you can. Either take a picture or stick the flower to the middle of a piece of paper. Can you label the parts of a real flower? Can you discuss the functions with someone? What does each part do and why is it important?