

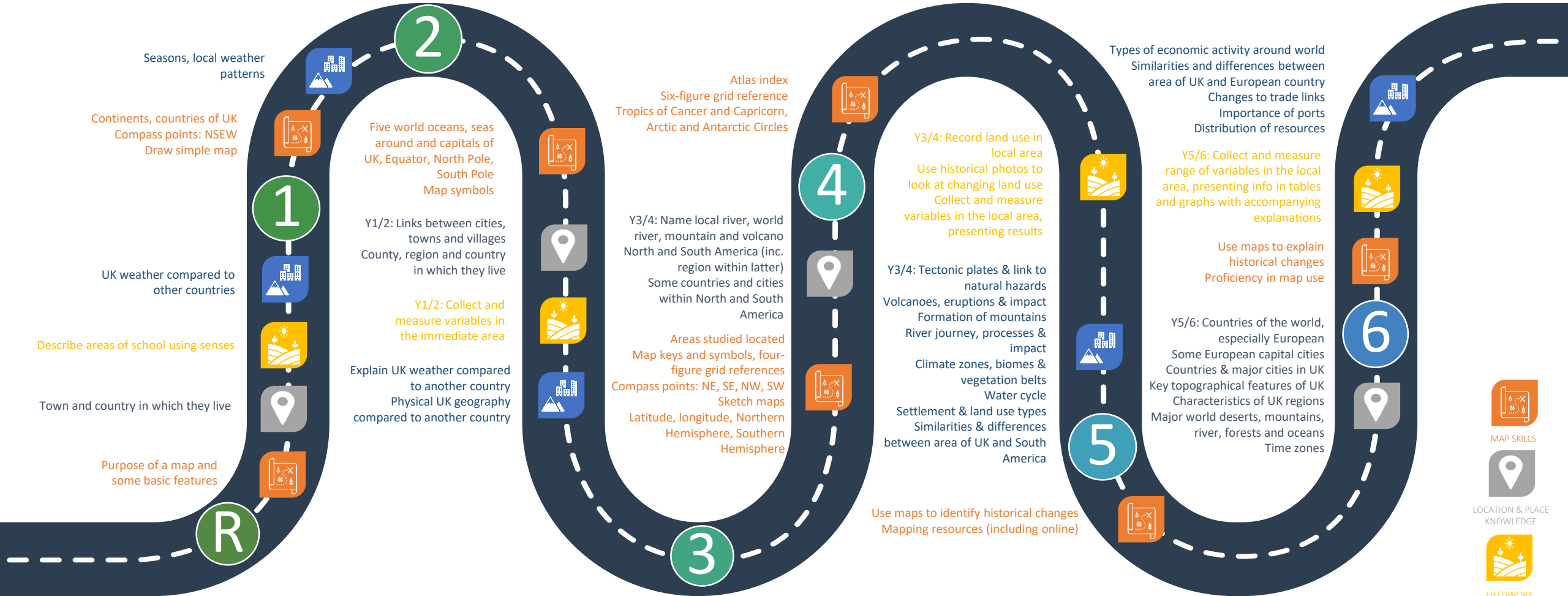


Geography at Melton Primary School

Year 1/2 topics (Geographical links): My Melton (local geography, drawing maps), Circle of Life (hot and cold locations, UK geography), Being Green (UK geography), Explorers (use of world maps), Transport (transport links), London (UK geography and maps)

Year 3/4 topics (Geographical links): What lies beneath (local geography), Wet and Wild (Mayans, Rainforest), Exploration (Rivers, mountains), Invaders (Map skills), Natural Hazards (Volcanoes, tsunamis, earthquakes, water cycle, biomes), Human Body (land use)

Year 5/6 topics (Geographical links): War and Peace (European geography), Wild (map work), Lights Camera Action (Hollywood), Ancient Greece (Map skills, European geography), Space, Changing Britain (Globalisation, changes to land use resulting from e.g. industrial revolution)



MAP SKILLS



LOCATION & PLACE KNOWLEDGE



FIELDWORK



HUMAN & PHYSICAL GEOGRAPHY